



# *Quick Bite* *Beautiful Bokeh*

This session is about the quiet, atmospheric side of photography — the way blur and softness can shape mood.

We're not chasing technical perfection here; we're exploring how light behaves when it slips gently out of focus.

Bokeh is subtle, calming, and expressive, and it gives us a way to guide the viewer's eye without shouting.



# What Is Bokeh?

Bokeh is the character of the out-of-focus areas in a photograph — those soft, glowing circles and creamy backgrounds that make a subject pop.

It's created by using a wide aperture, getting close to your subject, and placing that subject well away from the background.

Light sources in the distance become those magical bokeh orbs.



# Composing with Bokeh

## Composition comes first.

Place your subject where the bokeh naturally frames it — a rhythm of sharp detail against soft light.

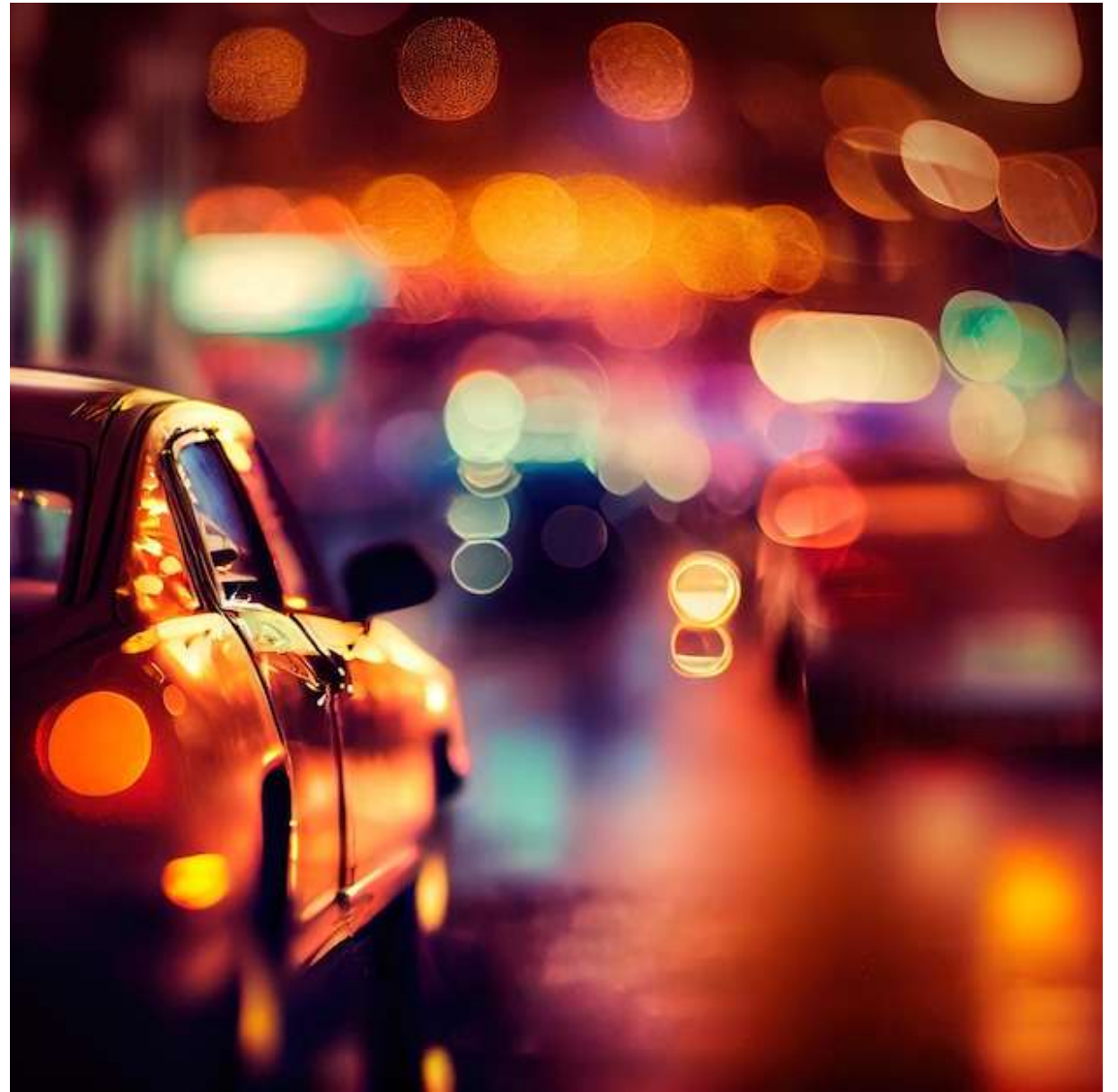
Balance the blur so it feels intentional, not excessive.

Let colour harmony and gentle background shapes guide the viewer's eye inward, keeping the story clear and the atmosphere calm.

Here's how to think about **bokeh composition first**, the part that turns blur into design rather than decoration.

## Composing with Bokeh

- **Anchor the subject** — Place your subject where the bokeh naturally frames it. A central or rule-of-thirds position works well when the background lights echo the subject's shape.
- **Balance the blur** — Too much bokeh can feel empty; too little looks cluttered. Aim for a rhythm — sharp detail against soft light.
- **Use colour harmony** — Warm bokeh behind cool subjects (or vice versa) creates contrast and depth.
- **Guide the eye** — Let the bokeh lead toward the subject, not away. Diagonal light trails or circular highlights can act like arrows.
- **Keep story over spectacle** — The blur should serve the image's mood — intimacy, calm, or mystery — rather than dominate it.





# Sharp Subject, Soft World

Choose one precise detail — an eye, a petal edge, the surface of a crystal ball — and let that be the anchor.

With a wide aperture and close focusing, the world behind your subject dissolves into softness, becoming atmosphere rather than distraction.

The eye is drawn inward, guided by the calm contrast between clarity and blur, giving the image a sense of intention and quiet depth.

Here's a clear, elegant explanation of “**sharp subject, soft world**”, the classic bokeh mindset where the photograph feels anchored and dreamy at the same time.

### 🌸 **Sharp Subject, Soft World**

- **Pin-point focus** — Choose one precise detail to lock onto: an eye, a petal edge, the surface of a crystal ball. That single point becomes the anchor of the image.
- **Let everything else fall away** — With a wide aperture and close focusing, the world behind your subject dissolves into softness. This contrast creates depth and mood.
- **Use blur as atmosphere** — The soft world isn't empty; it's a gentle stage of colour and light. Bokeh becomes part of the storytelling rather than just background.
- **Guide the viewer's eye** — The sharp subject becomes the visual magnet. The surrounding blur leads the eye inward, giving the image a calm, intentional feel.
- **Keep the subject simple** — A clean, well-defined subject works best. Complexity belongs in the blur, not the focal point.





# Wide Aperture = Big Bokeh

Open the lens wide —  $f/1.4$ ,  $f/1.8$ ,  $f/2$ , or  $f/2.8$  — and the depth of field collapses into a gentle fall-off.

Focus becomes precise, almost surgical, while the background dissolves into smooth, oversized bokeh.

Longer focal lengths amplify the effect, turning even ordinary light sources into soft, glowing shapes.

Combine a wide aperture with close focusing and a distant background for the richest, most atmospheric blur.

Here's a clear, elegant explanation of how to **use a wide aperture for bokeh**, the foundation of that soft, melted-background look you've been building into your slides.

### ● Using a Wide Aperture for Bokeh

- **Open the lens fully** — Set your aperture to f/1.4, f/1.8, f/2, or f/2.8. The wider the opening, the shallower the depth of field and the larger the bokeh circles.
- **Control the fall-off** — A wide aperture creates rapid blur fall-off. Place your focus precisely on the subject's key detail (eye, petal edge, crystal ball surface).
- **Use longer focal lengths** — At 85mm, 135mm, or 200mm, a wide aperture becomes even more powerful, compressing the scene and enlarging the blur.
- **Mind your distance** — Combine a wide aperture with close focusing and a distant background for maximum effect.
- **Watch the highlight shapes** — Wide apertures reveal the lens's aperture-blade design. Some lenses give round highlights; others create hexagons or cat-eye shapes near the frame edges.





# Distance & Bokeh

Increase the space between your subject and the background, and the bokeh grows softer and larger.

Move yourself closer to the subject and the blur deepens further.

Even small shifts — a step forward, a step back — reshape the atmosphere.

Longer lenses amplify the effect, turning modest distances into rich, velvety blur.

Distance becomes a quiet, powerful tool for sculpting the mood of the image.

Here's a clear, elegant explanation of how to **adjust distance for the bokeh effect**, the part that quietly transforms blur from “present” to “beautiful”.

### **Adjusting Distance for the Bokeh Effect**

- **Increase subject–background distance** — The farther your subject is from whatever sits behind it, the smoother and larger the bokeh becomes. Ten feet of space can look completely different from two.
- **Reduce camera–subject distance** — Move yourself closer to the subject. As the focus distance shortens, the background blur intensifies and the bokeh circles grow.
- **Use long-lens compression** — With an 85mm, 135mm, or 200mm, even modest background distances turn into creamy blur because the lens compresses the scene.
- **Shift your angle slightly** — A small step left or right can change the distance between your subject and the brightest background points, altering the size and placement of the bokeh.
- **Test in small increments** — Move the subject forward or backward by just a few inches. Bokeh responds dramatically to tiny distance changes.





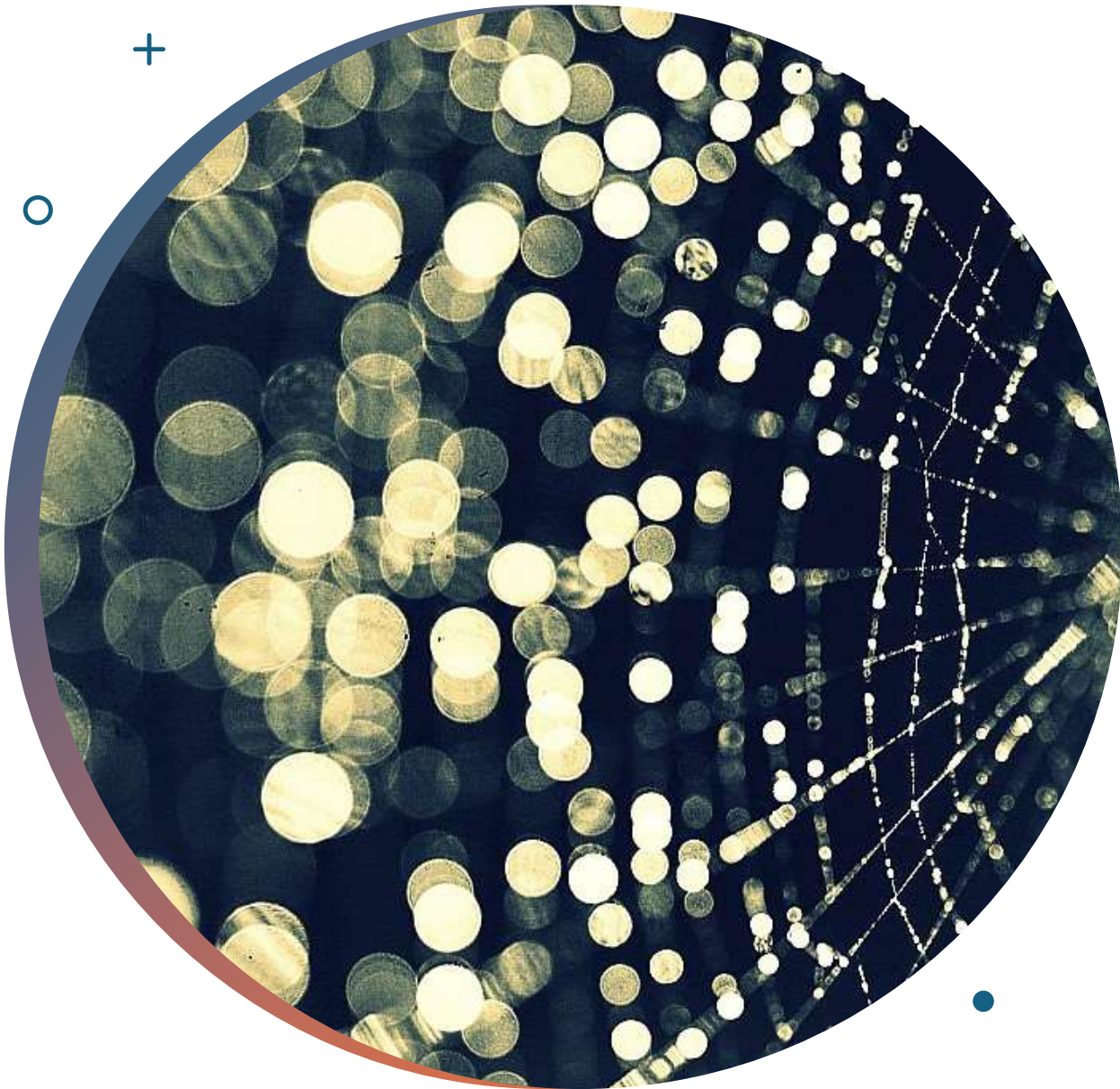
# Playing With Light

Light becomes a creative tool when it slips out of focus.

Point lights turn into luminous circles; backlight creates a gentle shimmer around edges; filtered sunlight scatters into layered highlights.

Reflections on water, glass, or metal add sparkle, while movement — a breeze, or a shift in angle — changes the pattern entirely.

Bokeh becomes a living texture, shaped by how you play with the light in front of you.



# Fast-Lens Capture

Fast lenses,  $f/1.2$ ,  $f/1.4$ , and  $f/1.8$  all gather light generously, allowing you to shoot in low light while creating rich, expressive bokeh.

Their wide apertures produce a shallow depth of field that isolates the subject with precision.

Highlights bloom into smooth circles, edges soften, and the world behind becomes a gentle wash of colour and atmosphere.

A fast lens doesn't just capture the scene — it shapes the mood.



# Crystal Ball Bokeh

A crystal ball acts as a miniature lens, bending and inverting the scene within it.

When paired with bokeh, it becomes a stage for light and reflection — the ball sharp and luminous, the world behind it melting into golden circles.

Use a wide aperture and generous background distance to let the ball sparkle while the blur sings quietly around it.

# ***Bokeh isn't just blur — it's a way of seeing.***

A sharp subject held against a soft world invites the viewer to slow down, notice the light, and feel the mood of the moment.

Whether shaped by distance, aperture, or playful light, bokeh becomes a gentle tool for storytelling.

What remains is simple: clarity where it matters, softness everywhere else.



# Try This At Home.

- **Fast-Lens Capture** — Shoot with your widest aperture (e.g.,  $f/1.4$ – $f/2.8$ ) and compare how the background changes as you open up the lens.
- **Close-Focus Study** — Move progressively closer to your subject and make a three-image sequence showing how the blur increases.
- **Background-Distance Test** — Place your subject at different distances from the background and record how the bokeh quality shifts.
- **Light-Source Hunt** — Find point-light situations (fairy lights, street lamps, sun through leaves) and create a bokeh-rich composition.
- **Composition First** — Build a strong composition where the bokeh supports the subject rather than overwhelms it.



# Five Bokeh Challenges



1. **Find a single subject** — Choose one object (a flower, a mug, a leaf) and place it well away from the background.
2. **Move closer** — Step as close as your lens allows. Watch the blur deepen.
3. **Use point lights** — Photograph fairy lights, street lamps, or sunlight through leaves. Let the highlights turn into soft glowing circles.
4. **Shift your angle** — Take a subject and move a little left, right, up, or down. Choose the best.
5. **Foreground softness** — Place something soft (a leaf, a branch, a scarf edge) close to the lens and let it blur into the frame, adding depth and atmosphere.