




Leading Lines & Perspective

***Landscape
photography – the
idyllic pastime.***


- You, your camera, and beautiful scenery stretching into the distance.
- The setting is perfect, the light divine, and you confidently snap frame after frame, certain that you're capturing the perfect image.






Landscape photography – the idyllic pastime.

- Once you get home, you load the SD card into your computer, and begin to browse through the images in Lightroom.
 - Your shots are well exposed.
 - You haven't blown your highlights or lost detail in the shadows.
 - Your depth of field is deep enough, and you absolutely nailed the focus.




***Landscape
photography – the
idyllic pastime.***

- Despite that, you can't help but ask yourself: “Why are these shots so bland?”



***Landscape
photography – the
idyllic pastime.***

- Even with perfect light and a beautiful landscape, there may be one more ingredient needed to create a truly eye catching landscape image.



***Landscape
photography – the
idyllic pastime.***

- Those missing ingredients were probably ‘Leading Lines and Perspective,’ which are two of the rules of composition.
- And understanding how it affects our images is a critical skill in photography.



Complementary Roles:

Often, these techniques work well together.

- For instance, in a photograph of a railway stretching far into the distance, the tracks converge at a vanishing point through linear perspective.
- While the parallel lines of the rails serve as leading lines that guide the eye to the distant focal point.



Application Flexibility:

- Linear perspective tends to be used in settings, like architecture or landscapes, where a precise depiction of space is desired.



Application Flexibility:

- Leading lines, however, can be more playful or dramatic, whether in a tightly composed portrait or an abstract scene that intentionally disrupts typical spatial norms.

**What came first,
in the scheme of
things?**



What came first, in the scheme of things?

Perspective came first, historically speaking.

The concept of perspective, particularly **linear perspective**, emerged during the Renaissance Period (around the 14th to 15th century), revolutionising the way artists depicted depth and spatial relationships.

It was formally introduced by Filippo Brunelleschi, an architect, and Leon Battista Alberti, a polymath, who laid the foundation for how perspective works in art.

Then artists like Leonardo da Vinci and Masaccio popularised these techniques, creating lifelike and immersive compositions.



The Annunciation 1486 by Carlo Crivelli

What came first in the scheme of things?

Leading lines, on the other hand.

Were always inherently used in art and design (even unintentionally) as part of natural composition techniques.

However, the conscious emphasis on leading lines as a specific concept likely came later, refined and studied as visual storytelling in photography and modern design advanced.





So, while leading lines have existed intuitively in all visual art, linear perspective marked a groundbreaking moment in how artists approached realism and depth.

Fascinating how these ideas evolved, isn't it?



Let's start with Leading Lines



Leading Lines

- **Definition:** Leading lines are visual elements that guide the viewer's eye through the image, often towards a focal point or subject.



Leading Lines

- **Types:**
These can be natural (like rivers, tree branches, or paths) or man-made (like roads, fences, buildings, or even shadows).



Leading Lines

- **Purpose:**
They create a sense of depth, movement, and focus, drawing viewers into the scene and helping them navigate the composition. Think of them as a visual tour guide, pointing viewers to the part of the photo that tells the story.



Leading Lines

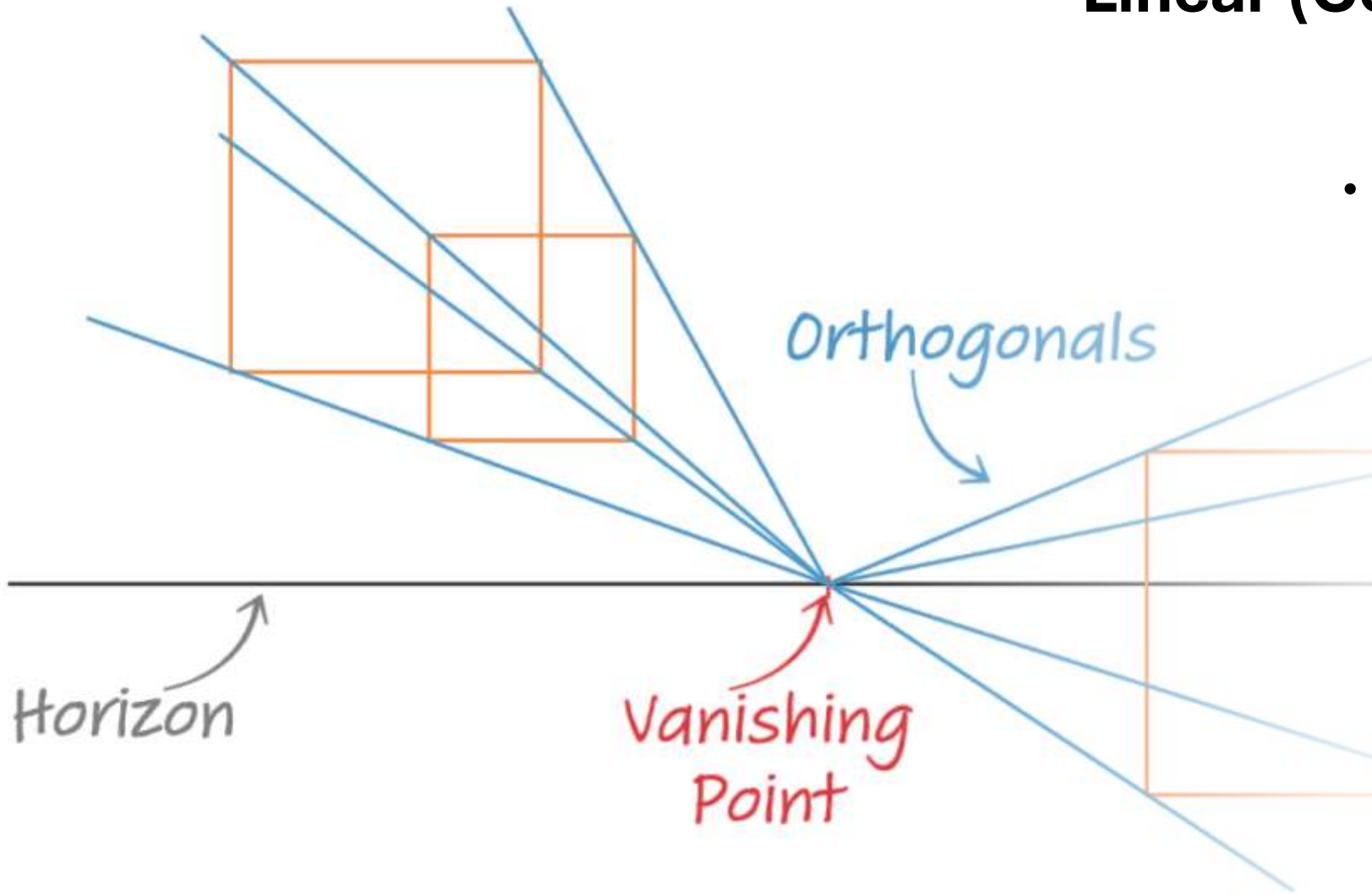
- **Example:**
A photo of a winding road leading to a sunset—your eye naturally follows the road towards the horizon.



Linear Perspective



Linear (Common) Perspective



- **Concept & Function:**

- Linear (common) perspective is a formal system used to represent a three-dimensional space on a two-dimensional surface.
- By arranging parallel lines to converge at one or more vanishing points (often on a horizon line), it creates an accurate and mathematical depiction of depth.
- This technique establishes the overall spatial structure of a scene.



Linear (Common) Perspective

Usage:

- Artists and photographers use linear perspective to construct realistic environments, think of a long, receding road or a row of buildings that appear to shrink with distance.
- It provides a consistent framework for understanding scale and proportion within the image.

Why It Matters

- Linear perspective provides structure and realism to compositions, making scenes feel lifelike and organised.
- It also influences how viewers perceive scale and proportion, elevating storytelling and emotional engagement in art.
- This concept has carried over to photography and even digital design today!
- It's amazing how something invented centuries ago still shapes how we create and view the world.



Types of Linear Perspective



Zero Point
Perspective



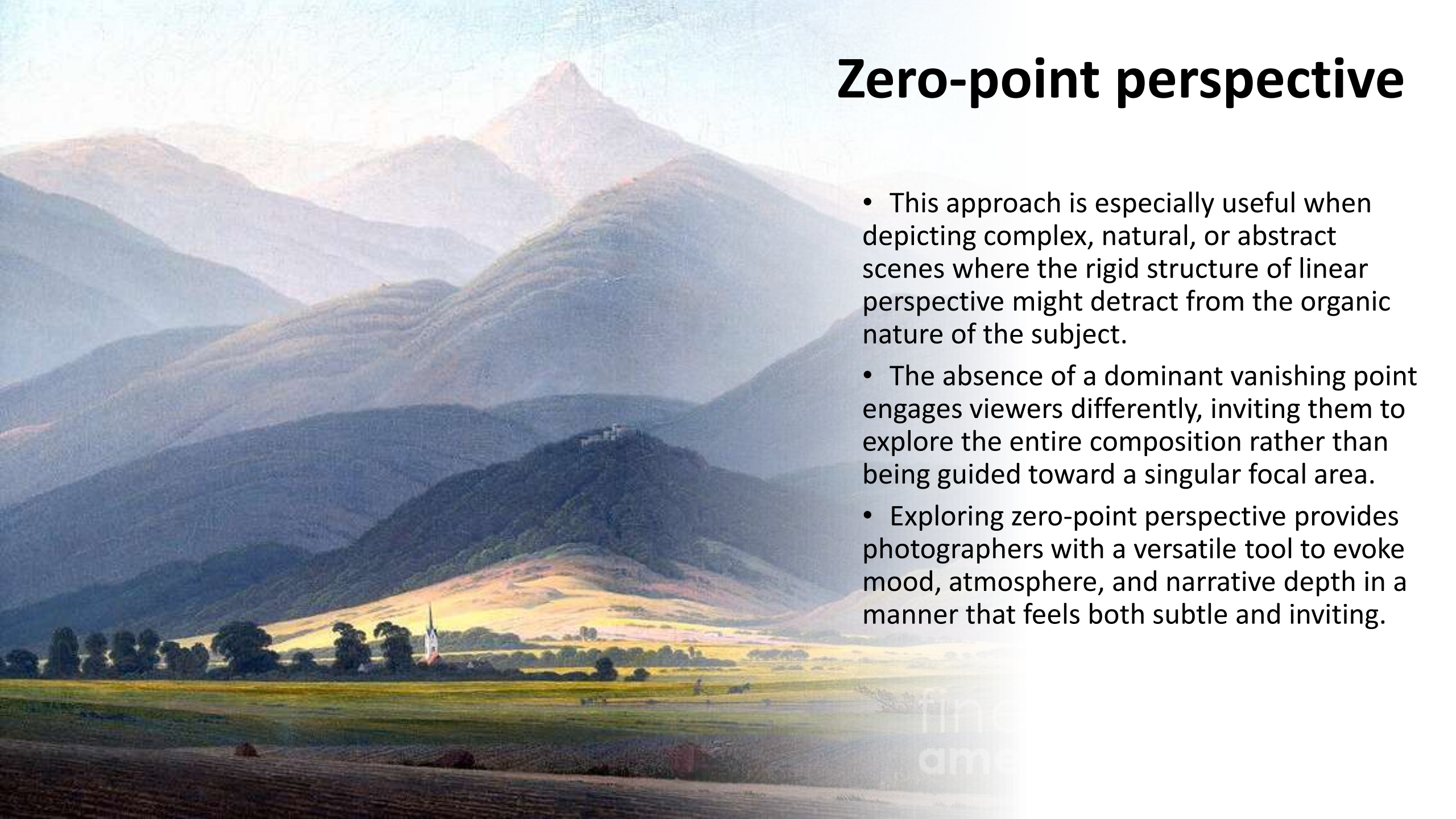
Single Point
Perspective



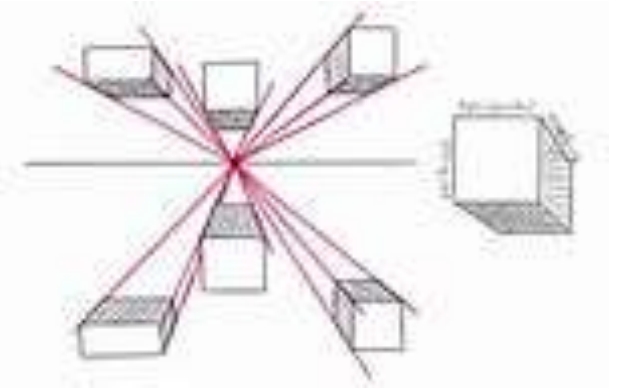
Two Point
Perspective

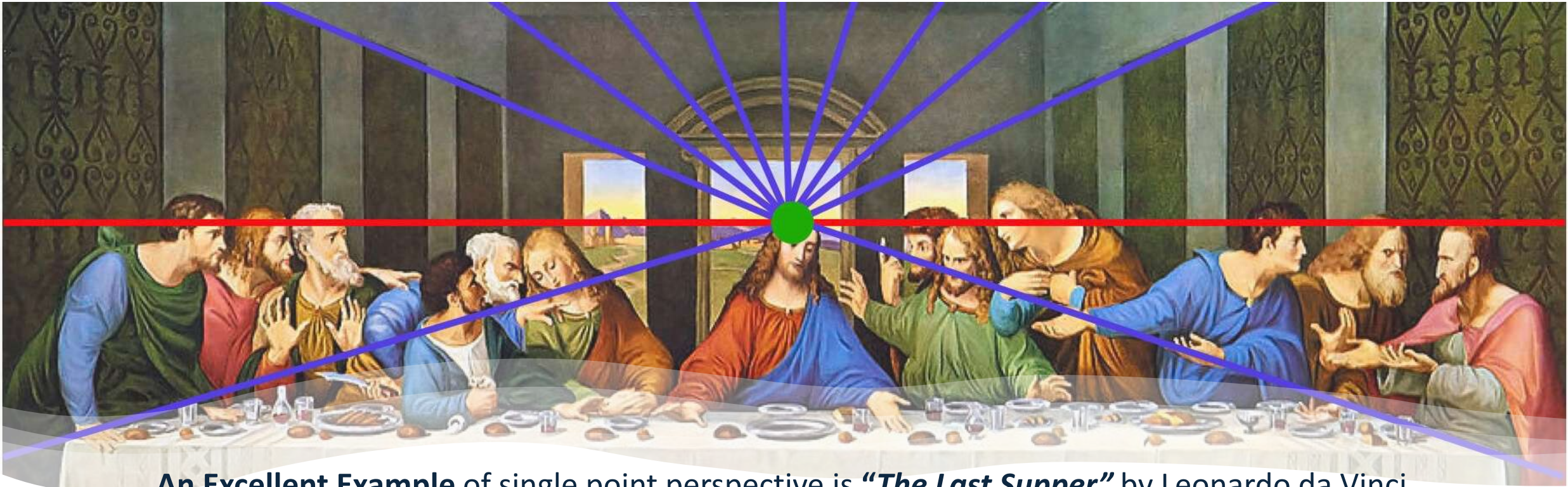
Zero-point perspective

- This approach is especially useful when depicting complex, natural, or abstract scenes where the rigid structure of linear perspective might detract from the organic nature of the subject.
- The absence of a dominant vanishing point engages viewers differently, inviting them to explore the entire composition rather than being guided toward a singular focal area.
- Exploring zero-point perspective provides photographers with a versatile tool to evoke mood, atmosphere, and narrative depth in a manner that feels both subtle and inviting.



Single-Point Perspective





An Excellent Example of single point perspective is “*The Last Supper*” by Leonardo da Vinci. In this masterpiece, all orthogonal lines converge at a single vanishing point directly behind Jesus’ head, emphasising him as the focal point of the composition.



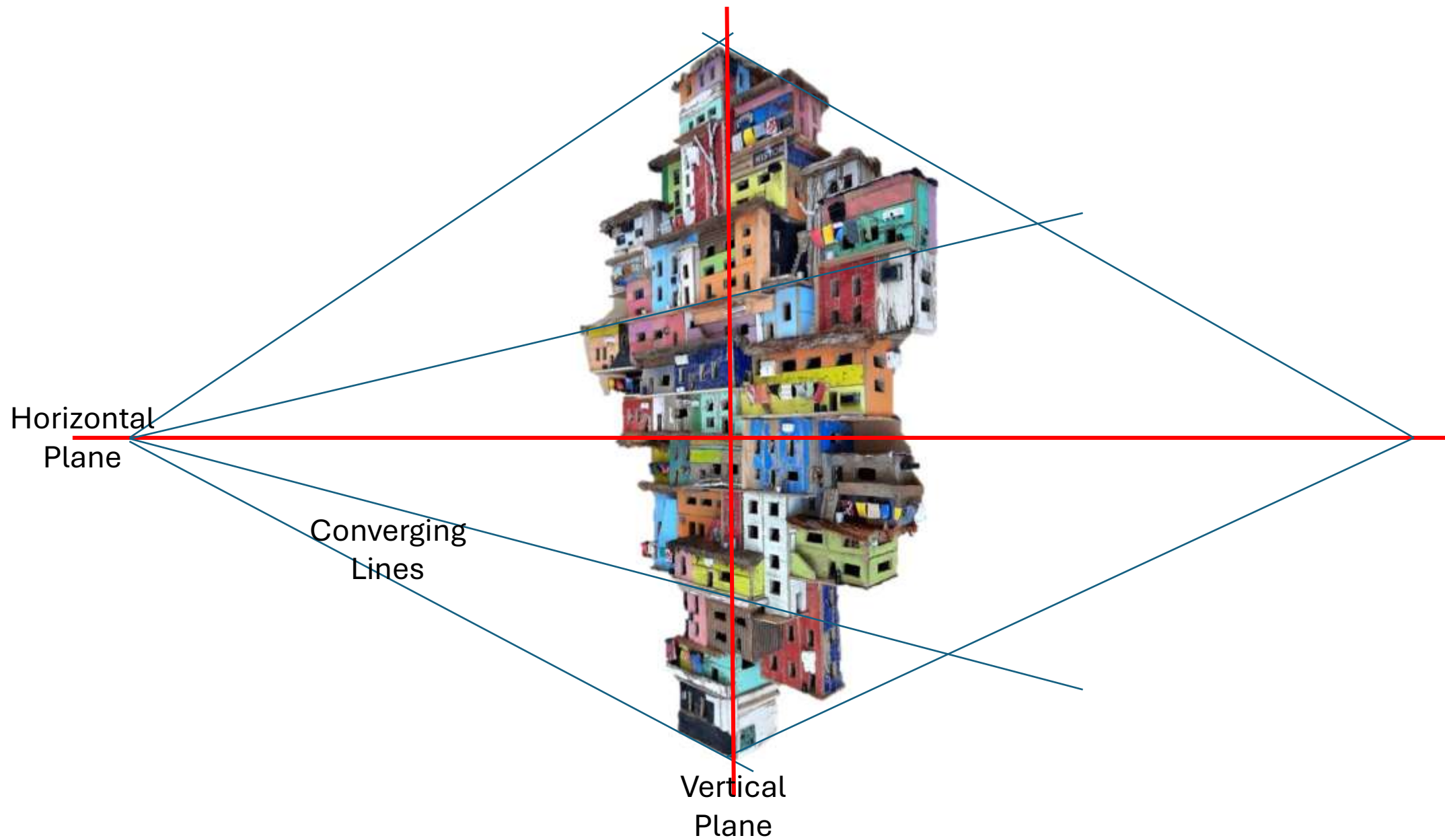
● Vanishing Point

— Horizon Line

— Perspective Lines

Two-Point Perspective



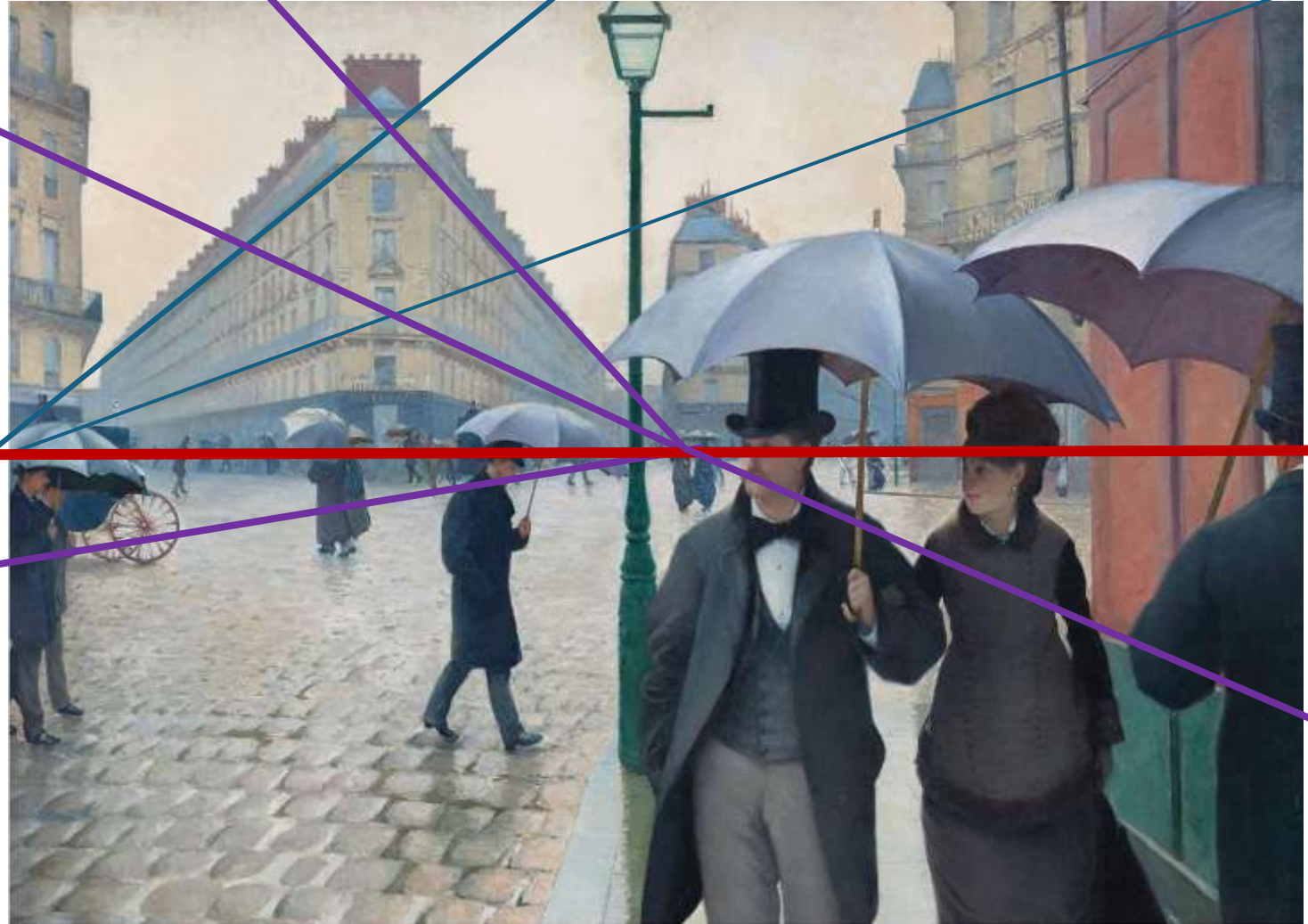


Two Point Perspective

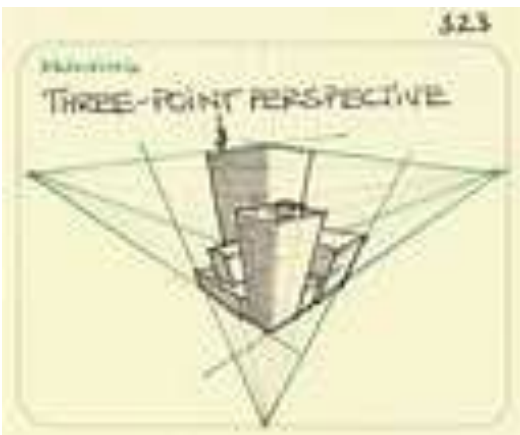
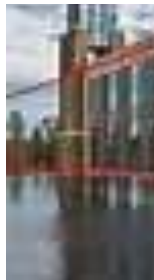
A Good Example of Two Point Perspective:

“Place de l’Europe” by Gustave Caillebotte (1877).

This painting of a Parisian street uses two vanishing points to depict a street corner, adding depth and dimension to the bustling urban scene.



Three-Point Perspective



SUA art-



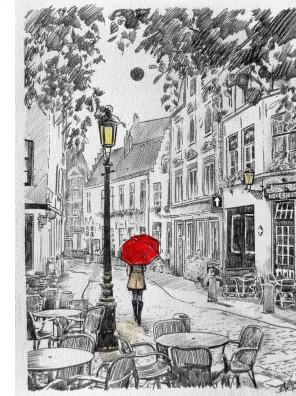
While the more common types of linear perspective, one-point, two-point, and three-point, are the most widely used, there are some additional variations and creative approaches to perspective worth exploring.

These additional perspectives show how flexible and creative perspective techniques can be.

Maybe at another time!

Working with both **leading lines** and **perspective**

Working with both **leading lines** and **perspective** in art or photography can lead to incredibly dynamic and visually engaging compositions. Here are some ideas for how to combine these techniques effectively:



1. Identify the Perspective First



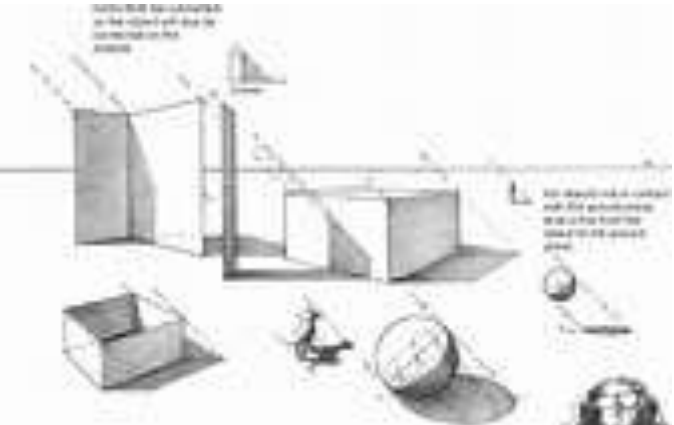
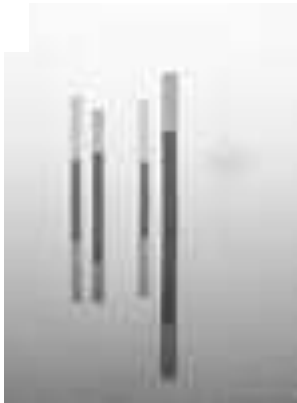
2. Use Leading Lines to Emphasize the Vanishing Point



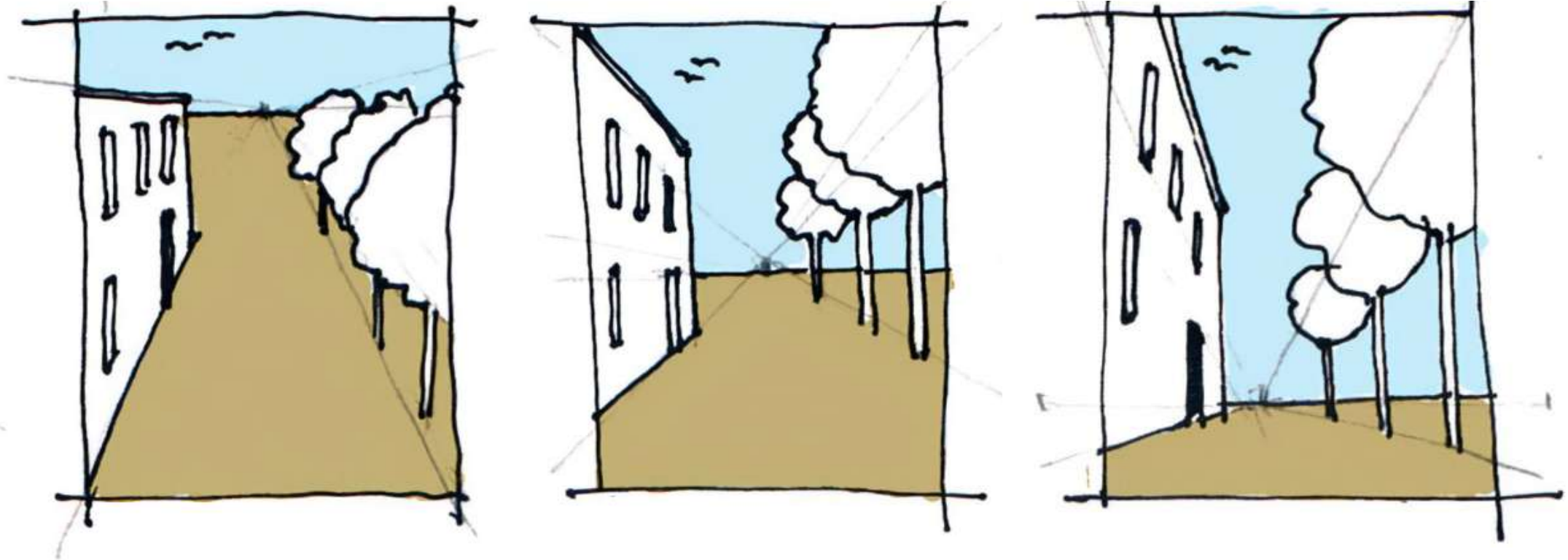
3. Experiment with Subject Placement



4. Be Mindful of Light and Shadows



In Conclusion

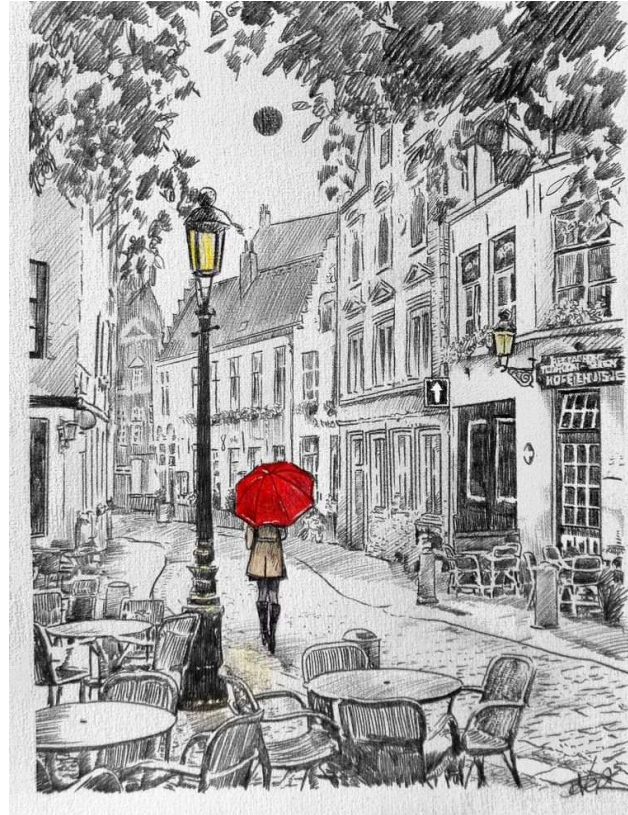


Linear perspective and leading lines are powerful tools in photography because they fundamentally shape how an image is perceived.

Linear perspective allows photographers to create the illusion of depth and dimension in a two-dimensional medium, drawing viewers into the scene and making them feel immersed.

Leading lines, on the other hand, direct the viewer's gaze toward specific elements of the composition, be it the subject, a vanishing point, or even the interplay of light and shadow.

In Conclusion



Together, these techniques transform flat photographs into dynamic visual narratives, enhancing both their aesthetic appeal and emotional impact.

Mastering these aspects ensures that your photos are not only visually compelling but also effective in communicating a story or message.

In essence, linear perspective and leading lines bridge the gap between technical skill and artistic expression, elevating photography from mere documentation to an immersive, storytelling art form.