



September

Four of your best  
for the month

There are 4 categories – You can enter 1, 2 or more categories, but only 1 photo per category  
all photos should be taken during the current month

#### MONOCHROME



- **Mono** – Black-and-white photography that strips away distraction and focuses on form, contrast, and emotion.

#### HUMAN WORLD



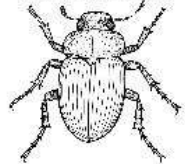
- **Human** – Portraits, candid moments, and character studies that capture the essence of people and connection.

#### NATURAL WORLD



- **Nature** – Landscapes, wildlife, and seasonal beauty from East Anglia and beyond.

#### CLOSE-UP



- **Close-up** – Macro shots and fine details that reveal hidden textures and unexpected perspectives.



# Caroline













# Diana













Linda





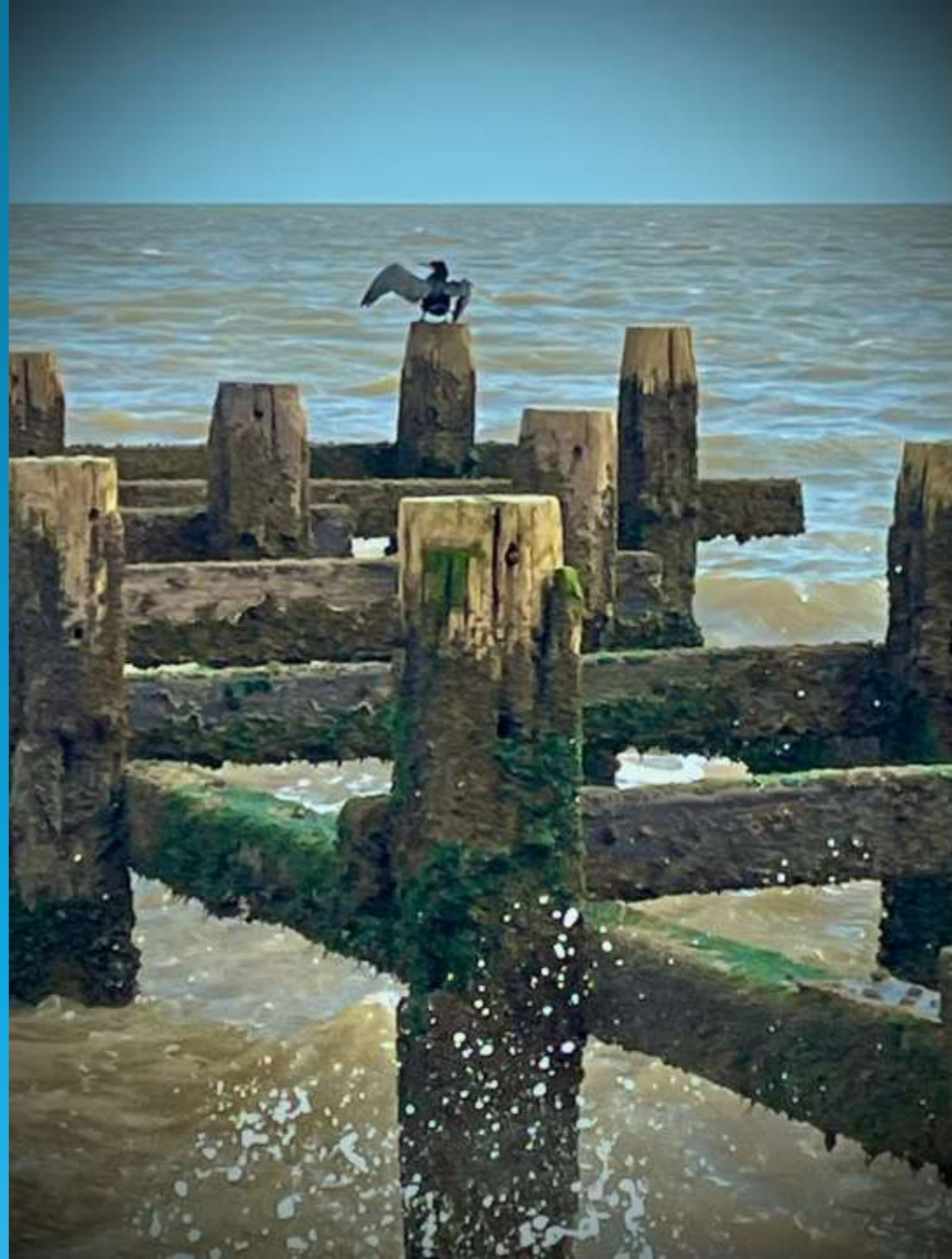




# Marion











Richard













Tony







