

**LC 7480**

**R** Chapel Road Stn.  
Woodside Stn.  
Chapel Rd Terminus  
Woodside Junction  
Hedley Grove

<b>A</b>	<b>4</b>	<b>E</b>
<b>C</b>	<b>EAST ANGLIA TRANSPORT MUSEUM,</b> Issued subject to Bye-Laws Not Transferable	<b>O</b>
<b>P</b>		<b>1</b>
<b>T</b>		<b>2</b>
<b>B</b>		<b>3</b>

Bell Punch Company, London.



*Photo Walk*  
**11<sup>th</sup> Sept 2025**

**East Anglian Transport Museum**  
**Carlton Colville**

## Today's Challenges

Look beyond the obvious and seek out the textures, echoes, and quirks that make this place hum with history.

Take up to 3 images using the following themes, with a max of one image per theme.

<b>Characterful Close-Ups</b>	<ul style="list-style-type: none"><li>○ Hunt for rust, rivets, worn signage, and tactile surfaces.</li><li>○ Try isolating details with shallow depth of field (f/2.8–f/5.6).</li><li>○ Bonus: Find a detail that hints at a forgotten function.</li></ul>
<b>Time Travel Compositions</b>	<ul style="list-style-type: none"><li>○ Frame vintage vehicles with modern intrusions (phones, trainers, signage).</li><li>○ Use reflections in windows or puddles to layer past and present.</li><li>○ Bonus: Capture a scene that could belong to any decade.</li></ul>
<b>Light &amp; Shadow Play</b>	<ul style="list-style-type: none"><li>○ Seek out shafts of light inside trams or buses.</li><li>○ Use silhouettes or backlighting to dramatise shapes.</li><li>○ Bonus: Find a shadow that tells its own story.</li></ul>
<b>Human Element</b>	<ul style="list-style-type: none"><li>○ Photograph visitors interacting with exhibits—curiosity, nostalgia, delight.</li><li>○ Look for gestures, expressions, or moments of connection.</li><li>○ Bonus: Capture someone mid-reaction (surprise, laughter, awe).</li></ul>
<b>Abstract &amp; Artistic</b>	<ul style="list-style-type: none"><li>○ Focus on patterns: seat rows, signage typography, wheel spokes.</li><li>○ Use bold colours and graphic shapes for visual punch.</li><li>○ Bonus: Create a composition that feels more like a painting than a photo.</li></ul>

# Bernard



Esso  
BENZOL  
MIXTURE  
GUARANTEED

OFFICES

SPITTING PROHIBITED

BIKE 427A



Bernard



Bernard



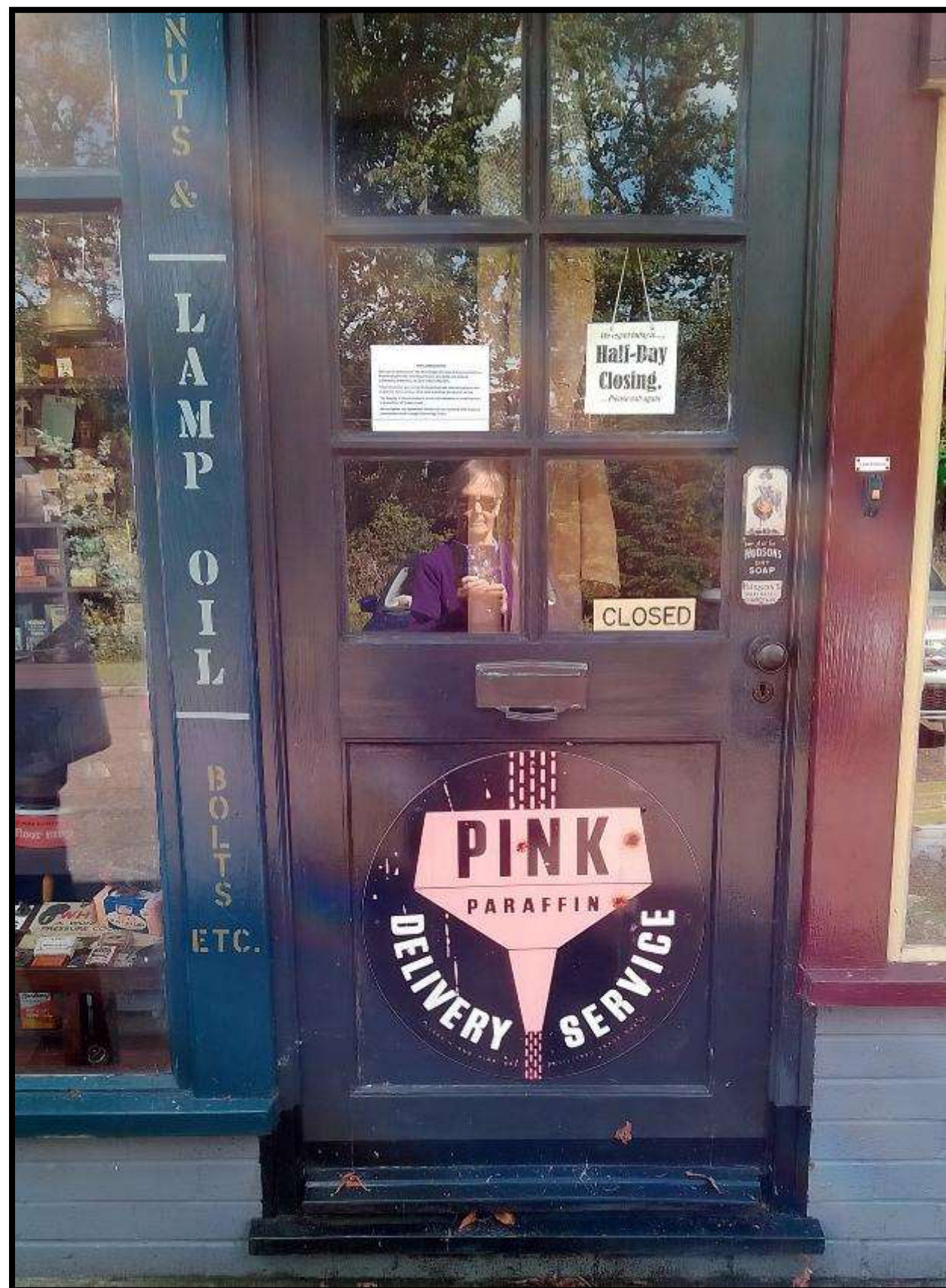
Bernard

# Elvie





**Elvie - The Human Touch**



Elvie - Human Influence



**Elvie - Engagement**




Elvie - Close Up With Rust

MAKERS TO  
T.M. THE  
KING & QUEEN

# FRY'S

MAKERS TO  
H.M.  
QUEEN ALEXANDRA

300  
GOLD  
MEDALS  
&  
DIPLOMAS



300  
GOLD  
MEDALS  
&  
DIPLOMAS

DESPERATION. PACIFICATION. EXPECTATION. ACCLAMATION. REALIZATION.  
"IT'S FRY'S"

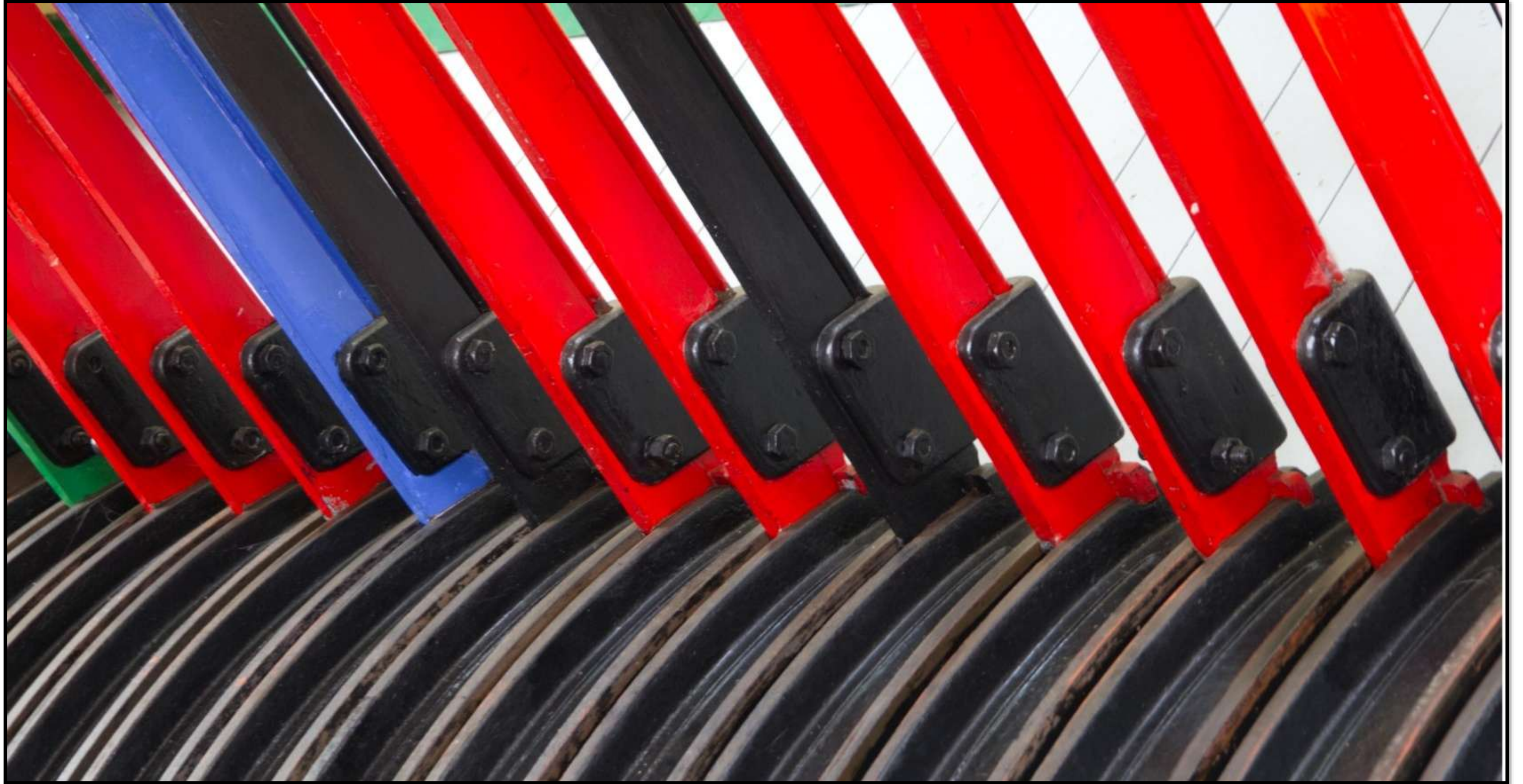
# CHOCOLATE

Elvie - Surprise Laughter and Awe



David





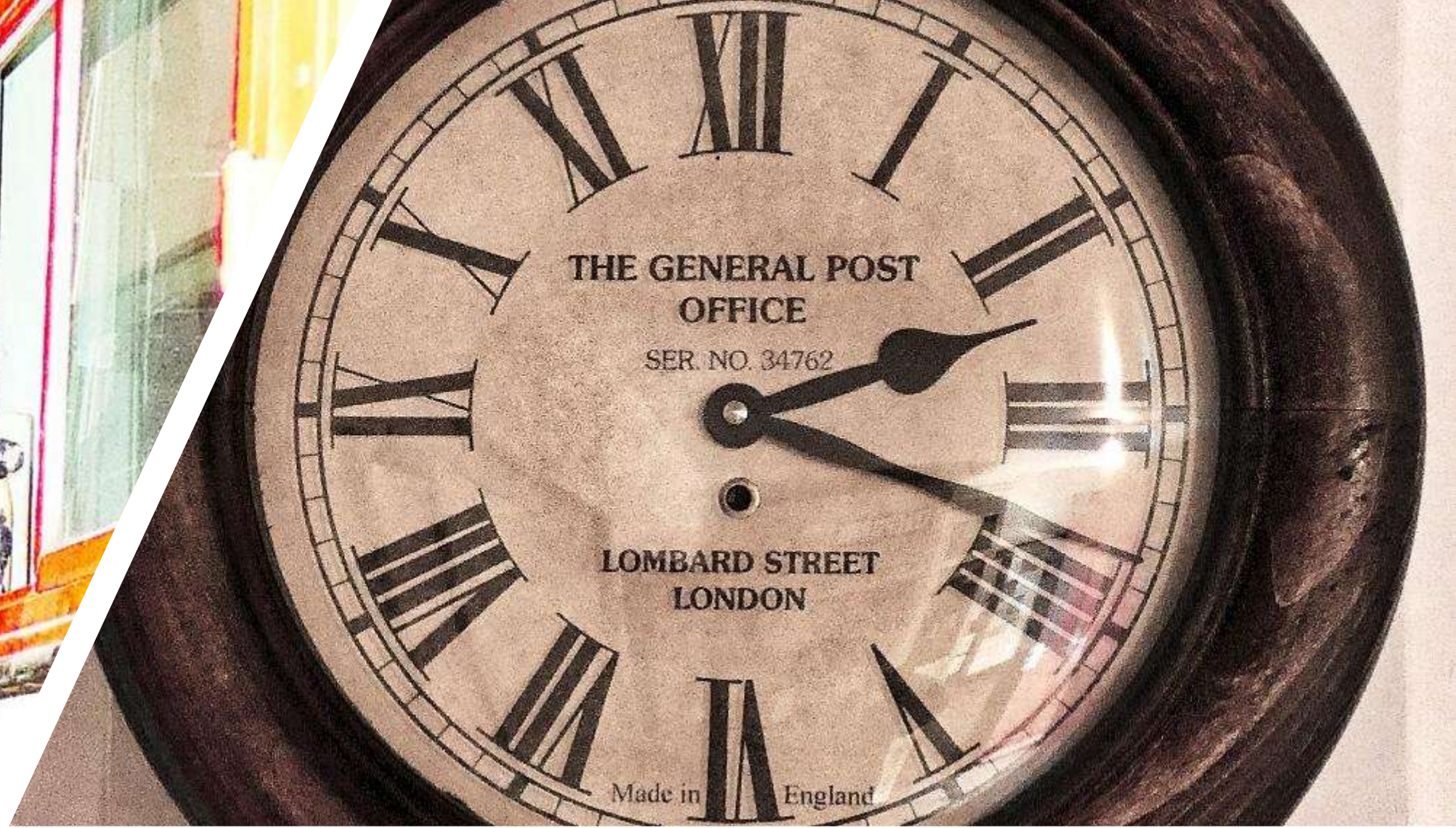
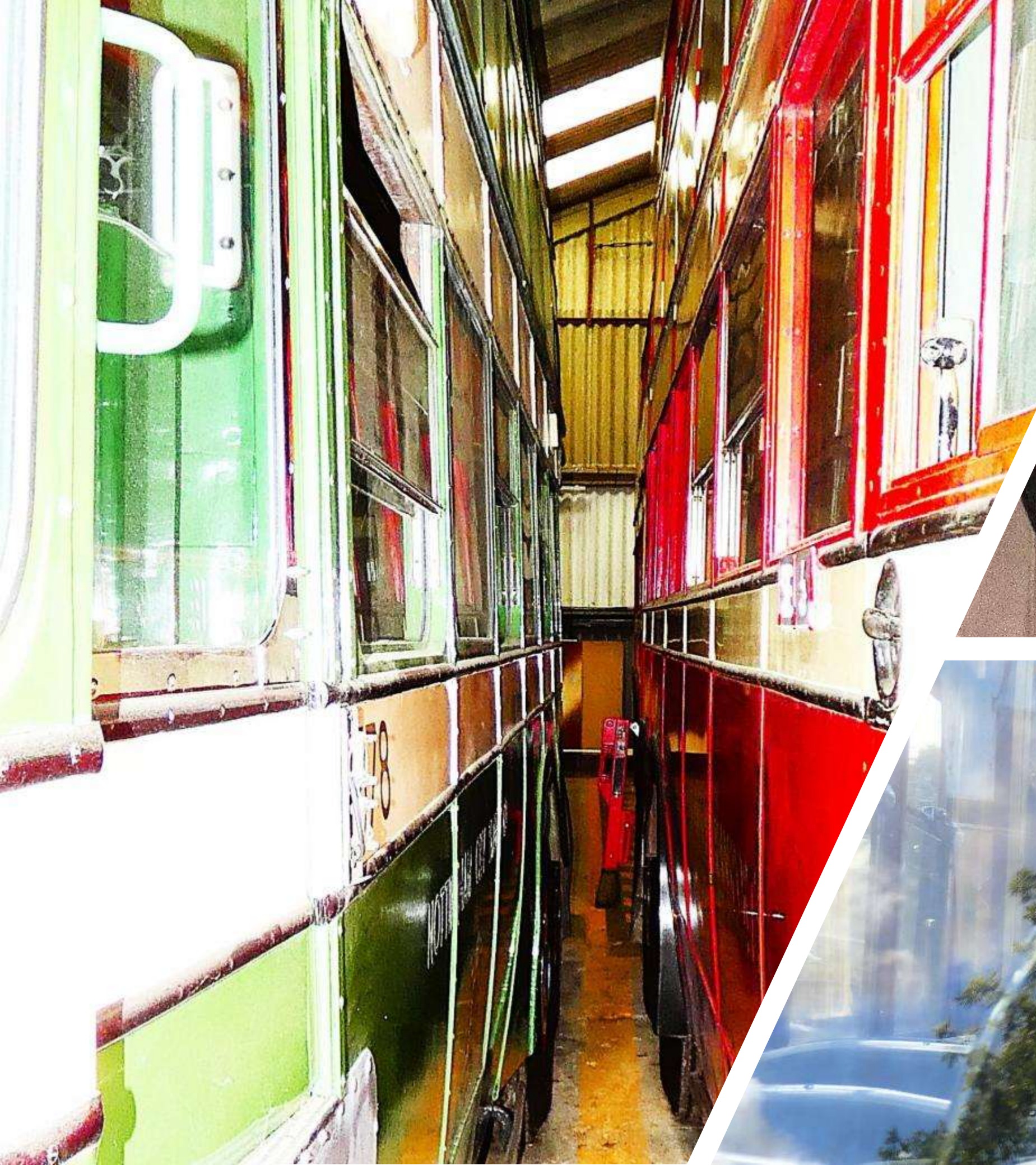
David - Abstract



David - Close Up

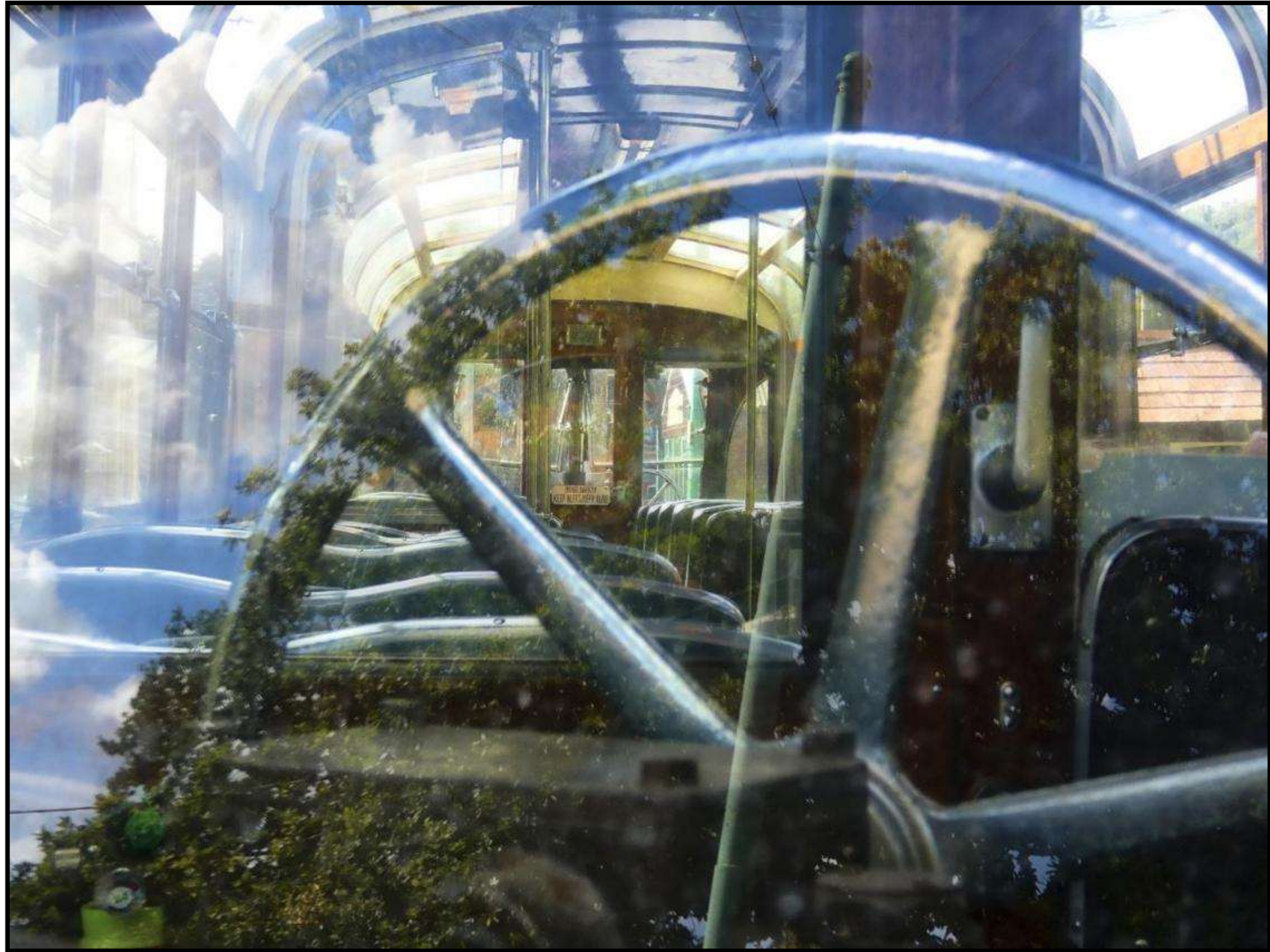


David - Silhouette

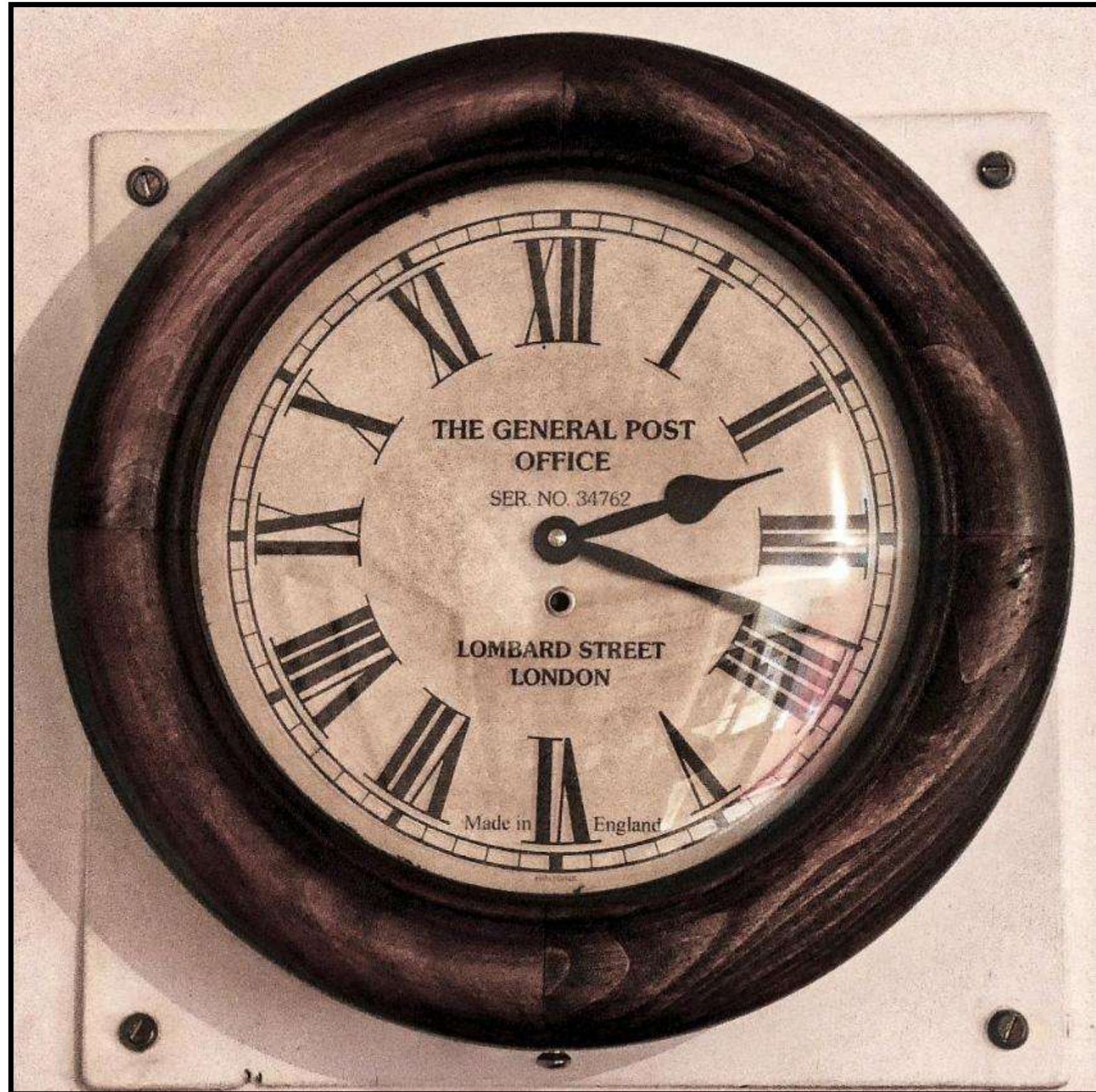




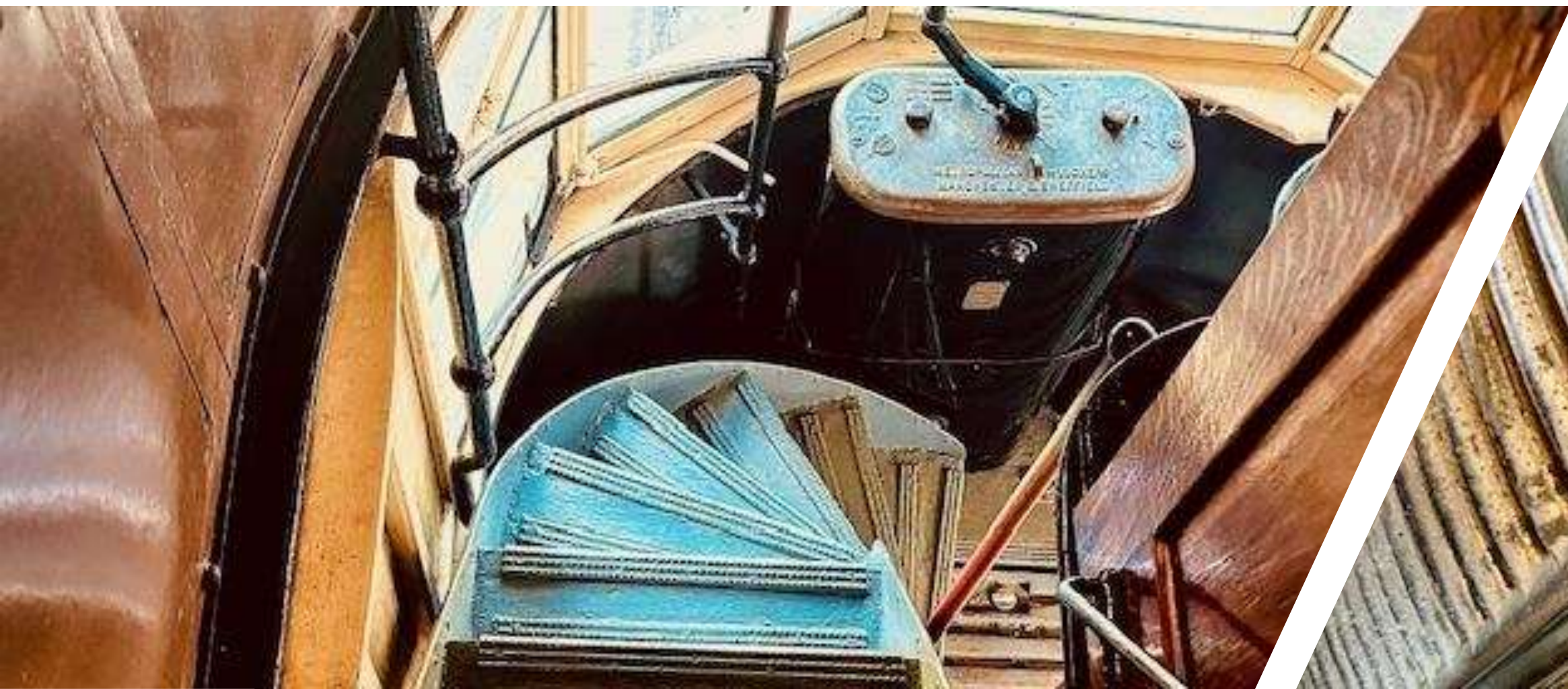
**Graham - Light and Shadow**



**Graham - Past and Present**



Graham - Time Travel





Helen - Reflections



**Helen - Could Belong To Any Decade**



Helen - Forgotten Functions



Helen - Close-Up

# Howard





Howard - A Mix of Expressions



Howard - Close-Up

John





John - Light and Shadow



John - Characterful Close-Up



John - Time Travel





Liz



Liz



Liz



Liz



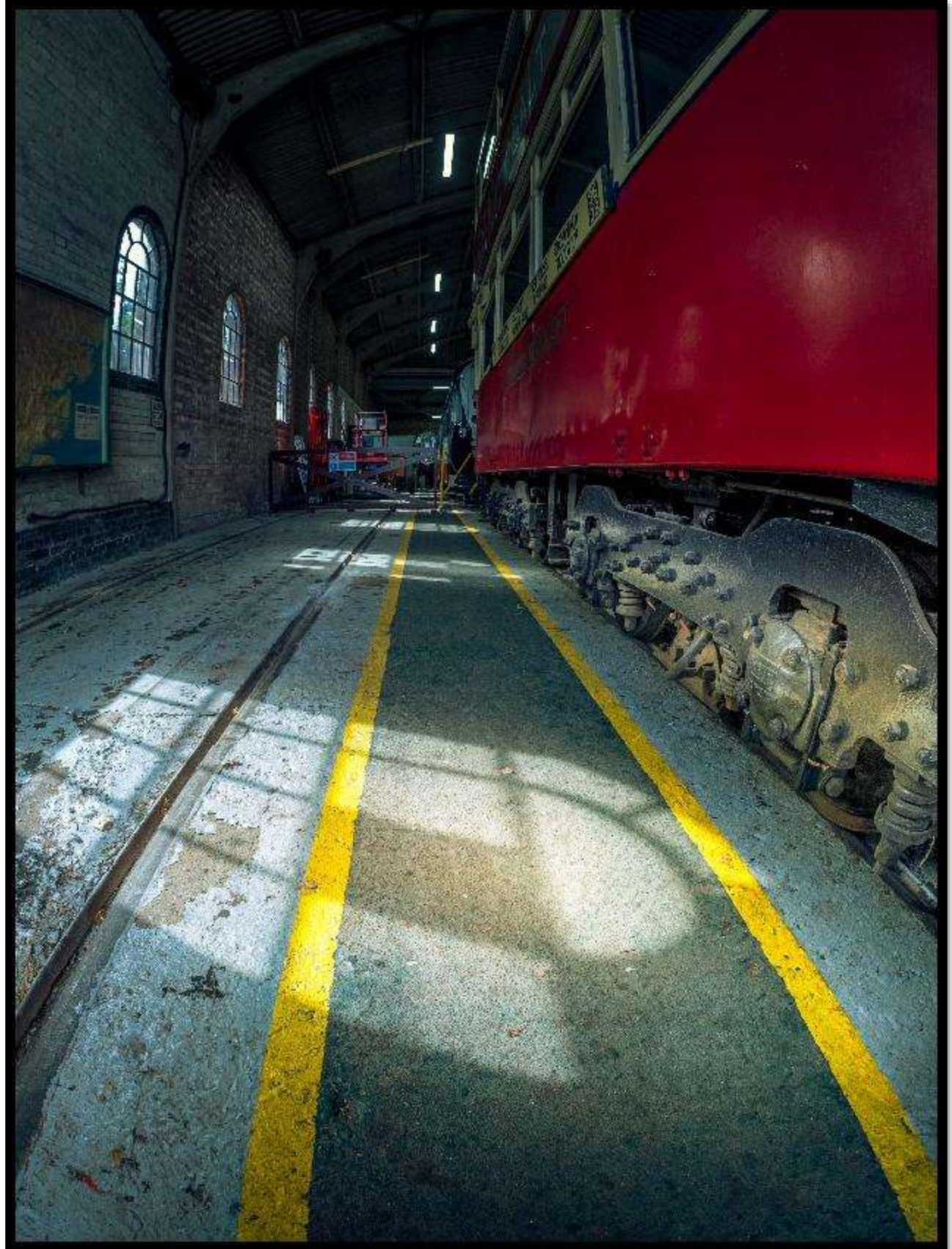
Liz

Pat J





Pat J - Red Rust



Pat J - Shaft of Light



**Pat J - Rows of Seats**





Peter - Light and Shadow



Peter - Rust and Rivets



Peter - Tactile Surfaces



Peter - Time Travel



Sue Bay



**ROYAL NAVY &  
ROYAL MARINES**  
GOOD PAY & PROSPECTS  
FOR FULL PARTICULARS APPLY TO:-  
**ADMIRALTY RECRUITING OFFICE**



Sue Bay - Worn Signage



**Sue Bay - The Part-Time Engineer**

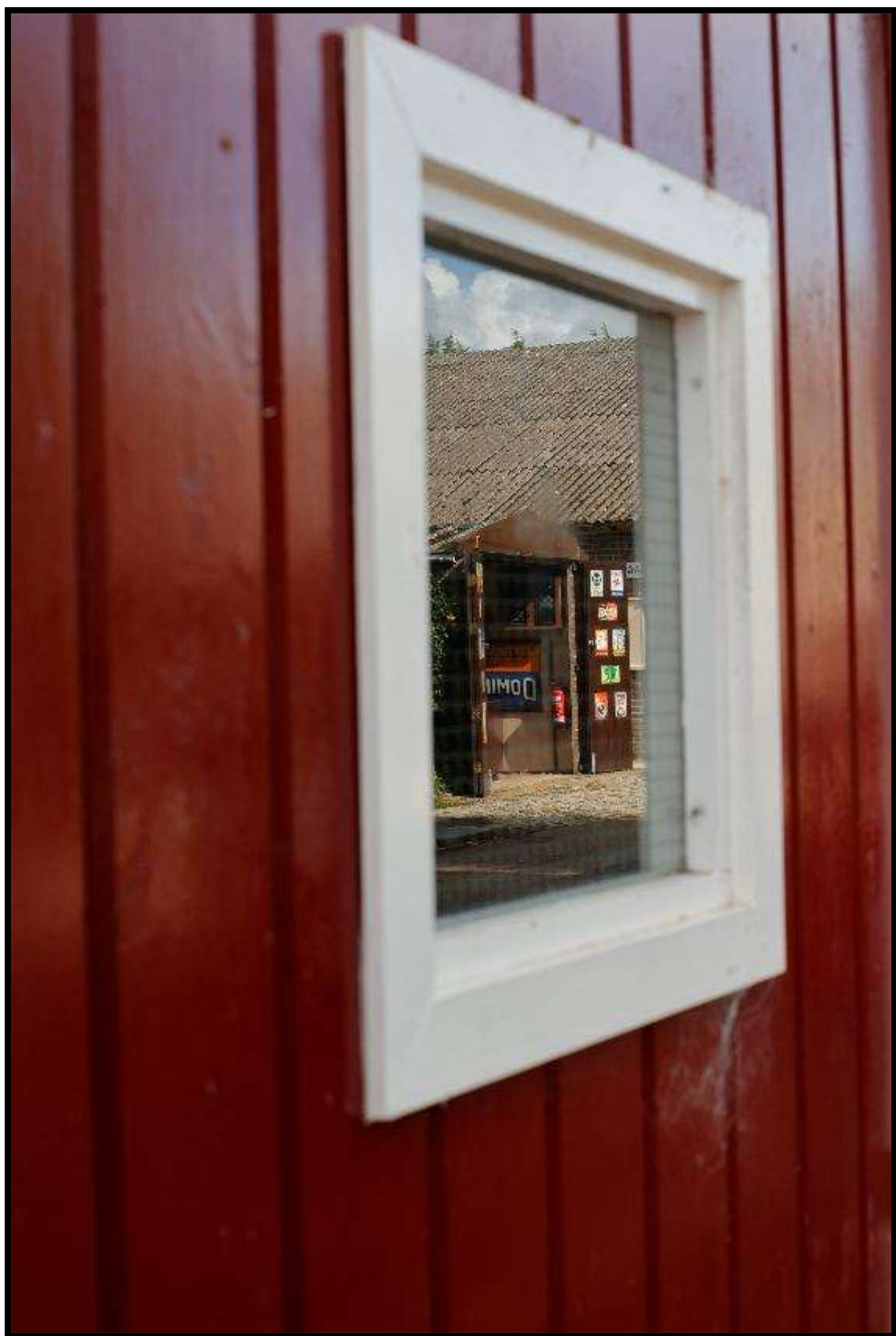


Sue Bay - Artistic Seat



Sue Bay - Time Travel





Sue Bo - Time Travel



**Sue Bo - Mid-Reaction**



**Sue Bo - Characterful Close-Up**