

# Madagascar November 2024



- Lying some 400Km off the Southeastern coast of Africa
- Tropical climate, rainy on the east coast
- Rainy season from November to March with numerous thunderstorms and cyclones
- 1300Km long
- 270Km wide
- Flight hop from Mauritius

# Antananarivo “Tana”

- Capital City
- ~4 million people
- Few points of interest
- Crowded, narrow streets



# Madagascar

## November

### 2024



- All day transit from Tana to Andasibe-Mantadia National Park
- A distance of around 143Km
- Due to poor road conditions the journey took most of the day





Final Destination the Andasibe-Mantadia National Park  
tropical rain forest

# Dusk/night walk

- Highlights are Mouse Lemurs
- Difficult to spot, but given away in the torchlight
- A multitude of insects moving at dusk
- Hot and sticky, fortunately with few biting insects





- Chameleons  
Many shapes, colours and sizes



- **Stick Insects**  
The guides find them, even in the darkness

Early morning  
“walk” in the Park

- Diademed Sifikas
- The troop arrived suddenly
- In close proximity
- Rapid movements among the trees
- Difficult dappled light conditions





Lemurs everywhere, and then they were gone



Common Brown Lemur

Trekking onwards in the morning led us to a more solitary inhabitant

The image is a vertical split-screen photograph of two Indri Indri primates in a dense, green forest. The left half shows a close-up of one primate, highlighting its black and white fur and its long, outstretched arm. The right half shows a wider view of the same scene, with the second primate visible in the background, partially obscured by the thick canopy of leaves and branches. The overall lighting is dappled, typical of a forest interior.

Indri Indri high in the trees  
Difficult to photograph



## Scopes Owl & Garter Snake

A more leisurely stroll in the afternoon discovered many other forest inhabitants.

## The art of camouflage



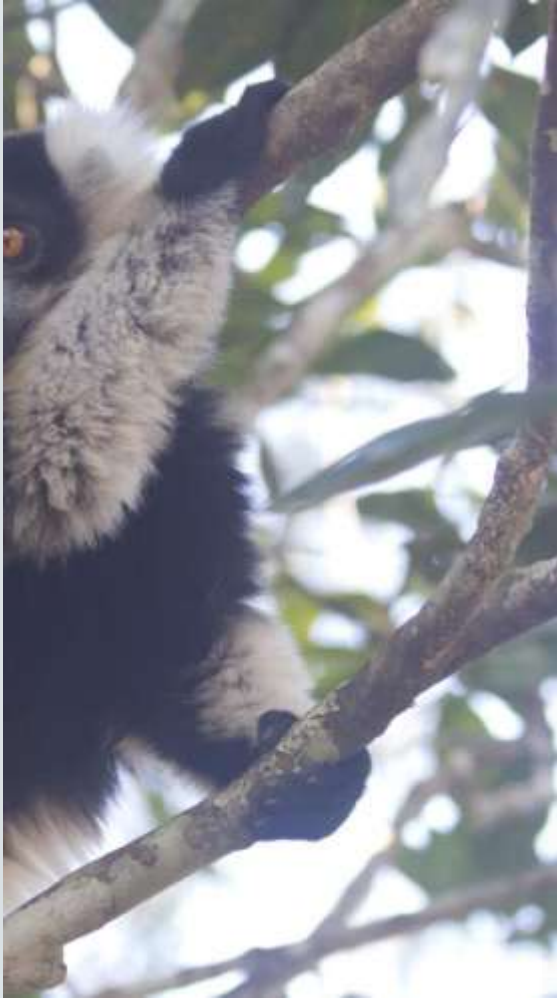


Wildlife everywhere

# Driving between locations we see evidence of Slash and Burn Practises



## A visit to Lemur Island Vakona Reserve



## Black and white Ruffed Lemur

- Diademed Sifika



# Red Ruffed Sifika





Brown Bamboo  
Lemur

Grey Bamboo Lemur

# Madagascar November 2024



- A two-day road journey to the south
- About 550Km
- Again, on atrocious roads
- Day one to Antsirabe (second largest city)
- Late afternoon arrival
- Early start on day two to Ranomafana



## Views in Transit

- Road-side markets
- Seasonal foods for sale
- Note the charcoal
- Little mechanization in evidence, especially in Padi fields



# A local aluminium casting plant

- All fabricated by hand
- No PPE or safety practices
- Finished product shown in final frame



Padi fields  
everywhere,  
terraced  
when needed



# Visit to wood carving studio

- Everything is hand carved
- Rough form of production line
- Home made fret saw (note the spring – sourced from a car seat)
- Surprisingly, a high-quality finish



# The local launderette-not a machine in sight





## Another early start into the National Park of Ranumafana

- Billed as a “moderate” hike
- Runners find a rare Greater Bamboo Lemur
- A quick about turn, a steep climb and we were there
- BUT, we were not alone



Secondary forest at the peak of the  
walk



Milne-Edwards Sifika

# Chameleon feeding

- A tongue of incredible length
- Exceptionally fast
- Note the catch in frame 3



—

# Giraffe Necked Weevil and local frogs

---



# Milne-Edwards Sifaca



# Madagascar November 2024



Return to Tana with an overnight stop in Antsirabe, the second city



Antsirabe

Elegance of historical French colonialism

Many delapidated buildings



# Communal fishing

---

# Padi fields everywhere





## Famandihana

- The turning of bones
- Commemorates the deceased every 2-7 years
- Exhumation, wrapped in silk, sprayed with wine or perfume
- Brought out for community festivities

# Madagascar November 2024



- Flight from Tana to the south, Spiny Forest
- Change in flight arrangements led to an extra day in Tana and an extension to the trip
- The internal flight was somewhat chaotic but finally we headed south
- Final destination Mandrare River Camp

# Unique flora of the Spiney Forest



# White Lemurs

- Another dawn start
- Flat terrain
- Mouse Lemurs hiding in the woodwork (not shown)
- Almost immediately we find a band of White Lemurs



# The iconic Ring Tailed Lemurs

- Later that morning
- Guides are familiar with feed routes and timings
- Higher activity rate before sunrise

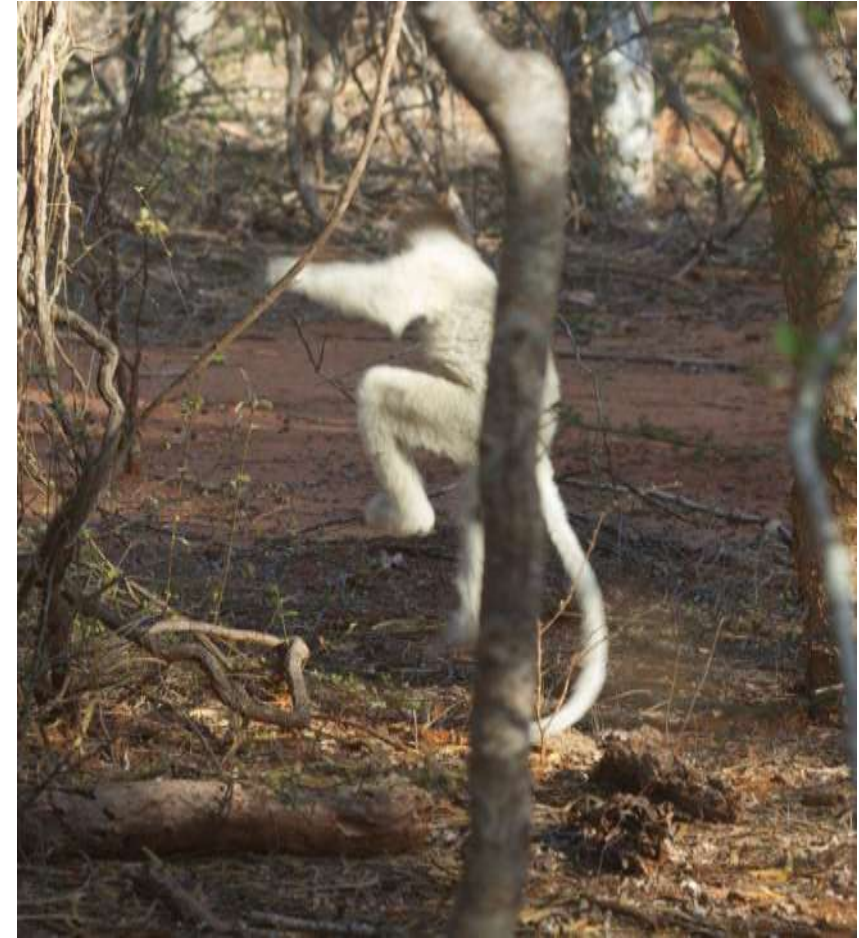


# The local village,

- Zebu, the measure of wealth
- The Baobab Tree, used to store water in the rainy season
- The houses configured with doors and windows facing west to avoid rains from the east
- Separate doors for men and women

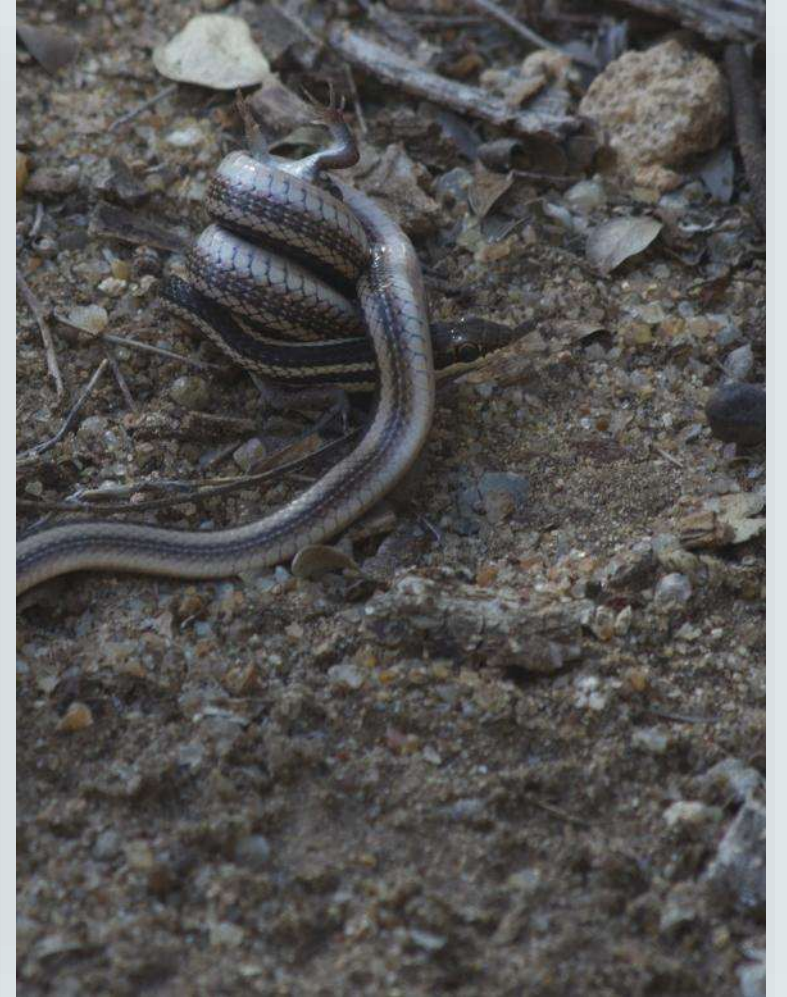


# The Dancers



## The constrictor

- An afternoon walk saw numbers of local fauna, notably the snake





# Avenue of the Baobabs

- The final evening, a visit to the Avenue of the Baobabs at sunset
- Many “trees” with some over 1,000 years old
- Undisturbed in the plantation of Agave plants

# Antandroy Tribe

- An al fresco bar was set up
- A fire was lit
- The guides gave a presentation of the area's history and culture
- The local tribe entertained us with some local dancing



# Madagascar November 2024

